

TEKTURN Bluetooth 5.3 USB Dongle User Manual

Installation Guidelines:

Compatible with Windows 7, 8.1, 10, and 11.

Installation and pairing steps may vary by system.


This manual features examples using a Windows 10 computer.

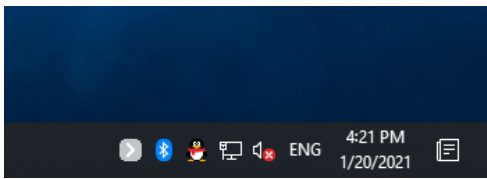
Suitable for Bluetooth-enabled devices like mice, keyboards, game controllers, speakers, and headsets.

Not compatible with macOS/iOS devices.

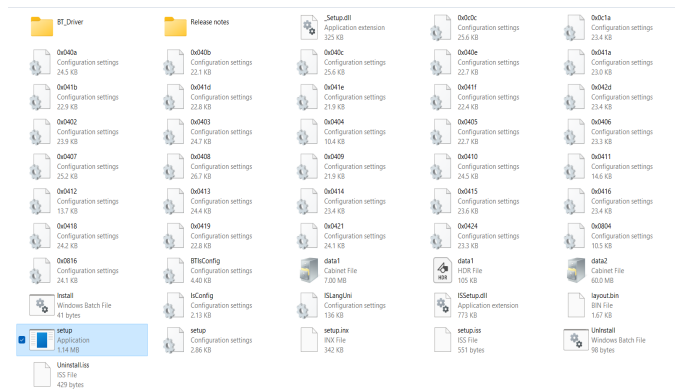
Features automatic reconnection with paired devices for ease of use.

Step One: Driver Installation

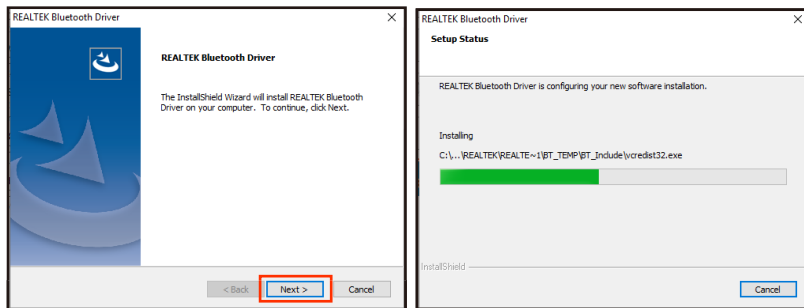
1- Insert the Bluetooth adapter into your computer's USB port. The system will automatically recognize it, and a Bluetooth icon  will appear in the lower right corner of your screen.



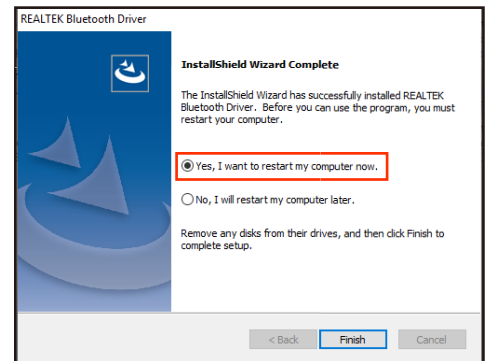
2. Access the provided download link to obtain the driver. Once downloaded, locate and double-click on [setup.exe] to start the installation process.



3. Follow the instructions in the pop-up window, clicking [Next] to proceed.



4. After completing the installation, click [Finish] and restart your computer. Upon reboot, the system should recognize and be ready to use the adapter.



Notices:

If your computer has built-in Bluetooth, please disable it first to prevent conflicts.

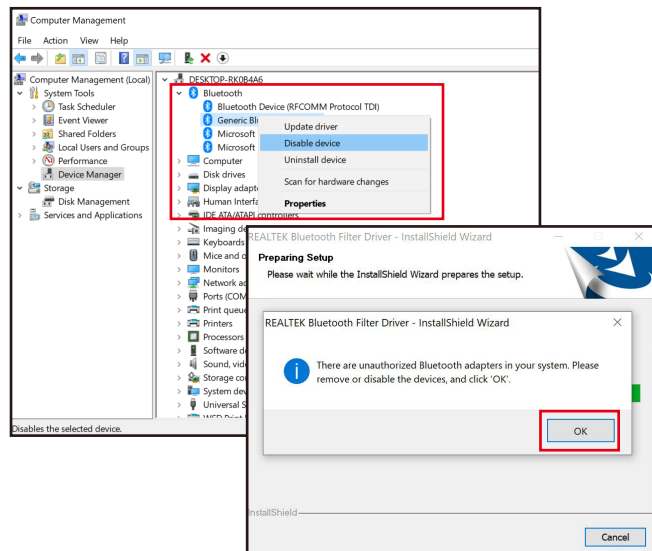
Follow these steps:

a. Unplug the adapter.


b. Go to [Device Manager] and disable the computer's internal Bluetooth function.

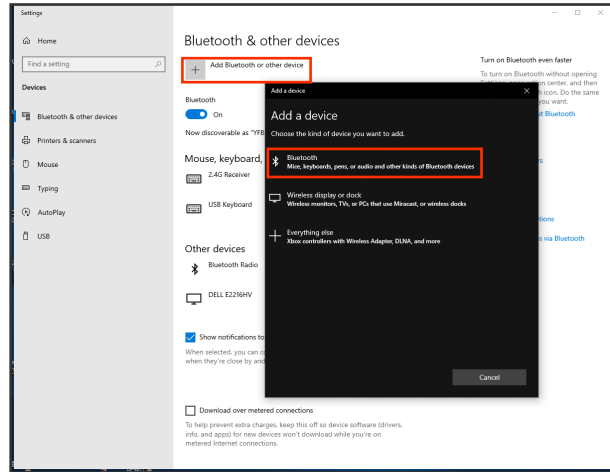
c. Reinsert the adapter into the computer.

Click [OK] in the pop-up window to continue with the installation.

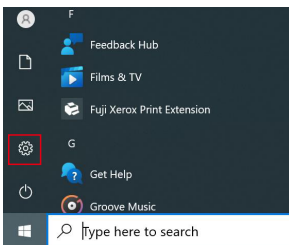
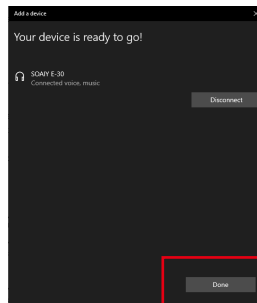
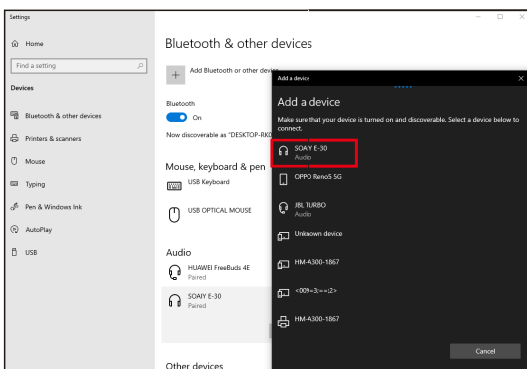


Step Two: Bluetooth Pairing

1. Activate Bluetooth on your device.
2. Double-click the Bluetooth icon [] on the computer's status bar, click the [+] icon, then select [Bluetooth] to access the list of Bluetooth devices.

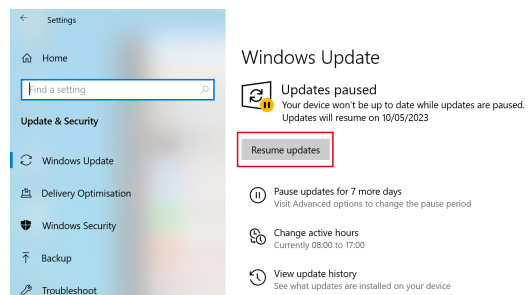
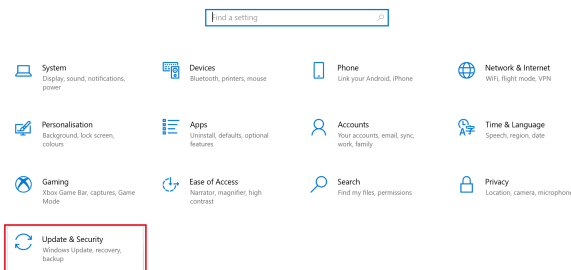


3. Locate your device's name in the list and click [Connect] to establish a connection.



This product supports plug-and-play on Windows 8.1, 10, and 11 systems. If you encounter issues with Bluetooth connectivity, please ensure that the Windows system's automatic updates are enabled. To check this, click on the 'Start' icon, then select 'Settings'.

After opening 'Settings', click on 'Update & Security' then 'Resume updates'. Once the updates are complete, reconnect the Bluetooth adapter



FAQ: Troubleshooting Bluetooth Connection Issues

1. Ensure that the Bluetooth device is within a 10m range of the product during connection.
2. If the display shows 'Bluetooth connected' but is unresponsive, restart the player.
3. Be patient during the auto-connection process, as connection speed can vary depending on the computer system.
4. If auto-reconnection fails, restart your Bluetooth device and attempt to connect again.